

FAN COIL UNIT SCHEDULE (ELECTRIC)													
SYM.	TYPE	BLOWER SECTION			DX COOLING COIL			PIPING SIZES			CHAR	AMPS	REMARKS
		CFM	SP.E	HP.	MBH	EAT	LAT	LIQ.	SUGT.	GD			
FC-1	WALL MOUNTED	880	NA	NA	34.6	80°F	55°F	3/8"	5/8"	3/4"	240/60/1	1.2	MITSUBISHI MSY-D36NA-8 WALL MOUNTED UNIT WITH CONTROLLER
FC-2	WALL MOUNTED	880	NA	NA	34.6	80°F	55°F	3/8"	5/8"	3/4"	240/60/1	1.2	MITSUBISHI MSY-D36NA-8 WALL MOUNTED UNIT WITH CONTROLLER
FC-3	WALL MOUNTED	600	NA	NA	22.0	80°F	55°F	1/4"	1/2"	3/4"	240/60/1	1.2	MITSUBISHI MSY-GL18NA WALL MOUNTED UNIT WITH CONTROLLER

CONDENSING UNIT SCHEDULE						
SYM.	BTU	EAT	CHAR.	MCA	WEIGHT	REMARKS
CU-1	36,000	95°F	240/650/1	21.0	126#	MITSUBISHI MUY-D36NA-1 WITH 0°F LOW AMBIENT KIT
CU-2	36,000	95°F	240/650/1	21.0	126#	MITSUBISHI MUY-D36NA-1 WITH 0°F LOW AMBIENT KIT
CU-3	22,000	95°F	240/650/1	14.0	121#	MITSUBISHI MUY-D36NA-1 WITH 0°F LOW AMBIENT KIT

ROOF TOP HEATING & AIR CONDITIONING UNIT SCHEDULE																
SYM.	CFM	OUTSIDE AIR REQUIRED	SP.E	BLOWER HP.	CHAR	MCA	WEIGHT	GAS CONN.	HEATING				COOLING			REMARKS
									BTU IN	BTU OUT	EAT	LAT	MBH	EAT	WB	
RT-1	1200	150	0.7"	3/4	240/60/1	28.0	550#	3/4"	81,000	65,000	65°F	104°F	36.0	80°F	62°F	LENNOX LGH036H4B WITH FACTORY ROOF CURB AND ECONOMIZER
RT-2	1995	200	0.7"	1.0	240/60/1	46.0	900#	3/4"	150,000	120,000	65°F	104°F	61.8	80°F	62°F	LENNOX LGH060H4B WITH FACTORY ROOF CURB AND ECONOMIZER
RT-3	1995	200	0.7"	1.0	240/60/1	46.0	900#	3/4"	150,000	120,000	65°F	104°F	61.8	80°F	62°F	LENNOX LGH060H4B WITH FACTORY ROOF CURB AND ECONOMIZER
RT-4	1200	150	0.7"	3/4	240/60/1	28.0	550#	3/4"	81,000	65,000	65°F	104°F	36.0	80°F	62°F	LENNOX LGH036H4B WITH FACTORY ROOF CURB AND ECONOMIZER
RT-5	2200	250	0.7"	1.0	240/60/1	46.0	900#	3/4"	150,000	120,000	65°F	104°F	61.8	80°F	62°F	LENNOX LGH060H4B WITH FACTORY ROOF CURB AND ECONOMIZER
RT-6	1850	200	0.7"	1.0	240/60/1	46.0	900#	3/4"	150,000	120,000	65°F	104°F	61.8	80°F	62°F	LENNOX LGH060H4B WITH FACTORY ROOF CURB AND ECONOMIZER
RT-7	1200	150	0.7"	3/4	240/60/1	28.0	550#	3/4"	81,000	65,000	65°F	104°F	36.0	80°F	62°F	LENNOX LGH036H4B WITH FACTORY ROOF CURB AND ECONOMIZER
RT-8	2200	250	0.7"	1.0	240/60/1	46.0	900#	3/4"	150,000	120,000	65°F	104°F	61.8	80°F	62°F	LENNOX LGH060H4B WITH FACTORY ROOF CURB AND ECONOMIZER
RT-9	2200	250	0.7"	1.0	240/60/1	46.0	900#	3/4"	150,000	120,000	65°F	104°F	61.8	80°F	62°F	LENNOX LGH060H4B WITH FACTORY ROOF CURB AND ECONOMIZER

GRILLE AND REGISTER SCHEDULE									
SYM.	TYPE	SIZE	CFM RANGE	THROW PATTERN	CONSTR.	FINISH	BALANCING DAMPER	FIRE DAMPER	REMARKS
D-1 CFM	CEILING	6x6	50-110	⊠	STEEL	COLOR BY ARCH.	NA	NA	PRICE MODEL SMD WITH BEVELED FRAME
D-2 CFM	CEILING	6x6	50-110	⊠	STEEL	COLOR BY ARCH.	NA	NA	PRICE MODEL SMD WITH BEVELED FRAME
D-3 CFM	CEILING	9x9	110-280	⊠	STEEL	COLOR BY ARCH.	NA	NA	PRICE MODEL SMD WITH BEVELED FRAME
D-4 CFM	CEILING SLOT	4'-0" x 2' SLOT	285-450	NA	STEEL	COLOR BY ARCH.	NA	NA	PRICE MODEL J5P WITH FLENUM
D-5 CFM	CEILING	9x9	110-280	⊠	STEEL	COLOR BY ARCH.	NA	NA	PRICE MODEL SMD IN 24x24 LAY-IN MODULE
D-6 CFM	CEILING	9x9	110-280	⊠	STEEL	COLOR BY ARCH.	NA	NA	PRICE MODEL SMD IN 24x24 LAY-IN MODULE
D-7 CFM	CEILING	9x9	110-280	⊠	STEEL	COLOR BY ARCH.	NA	NA	PRICE MODEL SMD IN 24x24 LAY-IN MODULE
D-8 CFM	CEILING	12x12	285-450	⊠	STEEL	COLOR BY ARCH.	NA	NA	PRICE MODEL SMD IN 24x24 LAY-IN MODULE
D-9 CFM	CEILING	8x8	150	⊠	STEEL	COLOR BY ARCH.	NA	NA	PRICE MODEL M5P6 MAX. SECURITY GRILLE
R-1	CEILING	10x10	100-300	NA	STEEL	COLOR BY ARCH.	NA	NA	PRICE MODEL 535 IN 24x24 LAY-IN MODULE
R-2	CEILING	12x12	300-450	NA	STEEL	COLOR BY ARCH.	NA	NA	PRICE MODEL 535 IN 24x24 LAY-IN MODULE
R-3	CEILING	16x16	450-700	NA	STEEL	COLOR BY ARCH.	NA	NA	PRICE MODEL 535 IN 24x24 LAY-IN MODULE
R-4	CEILING	20x20	700-1000	NA	STEEL	COLOR BY ARCH.	NA	NA	PRICE MODEL 535 IN 24x24 LAY-IN MODULE
R-5	CEILING	8x8	50-150	NA	STEEL	COLOR BY ARCH.	NA	NA	PRICE MODEL 535
R-6	CEILING	12x12	300-450	NA	STEEL	COLOR BY ARCH.	NA	NA	PRICE MODEL 535
R-7	CEILING	20x20	700-1000	NA	STEEL	COLOR BY ARCH.	NA	NA	PRICE MODEL 535
R-8	CEILING	8x8	150	NA	STEEL	COLOR BY ARCH.	NA	NA	PRICE MODEL M5P6 MAX. SECURITY GRILLE
SG-1	SOFFIT	8x8	50-150	NA	ALUM.	COLOR BY ARCH.	NA	NA	PRICE MODEL 636
EG-1 CFM	CEILING	10x10	100-300	NA	STEEL	COLOR BY ARCH.	NA	NA	PRICE MODEL 535

EXHAUST FAN SCHEDULE								
SYM.	TYPE	G.F.M.	S.P.E.	WATTS	CHAR.	R.P.M.	CONTROL	REMARKS
EF-1	CEILING MOUNTED	150	0.25	100	120/60/1	750	SWITCH SEE ELEC.	BROAN LOSONE SELECT MODEL L150 WITH BACKDRAFT DAMPER. 8" EXHAUST DUCT TO FLAT ROOF CAP
EF-2	ROOF MOUNTED	300	0.40	1/4 HP.	120/60/1	1450	OCC. SENSOR SEE ELEC.	TWIN CITY MODEL 085C BCRD ROOFTOP FAN WITH FACTORY MOUNTED ROOF CURB
EF-3	ROOF MOUNTED	300	0.40	1/4 HP.	120/60/1	1450	OCC. SENSOR SEE ELEC.	TWIN CITY MODEL 085C BCRD ROOFTOP FAN WITH FACTORY MOUNTED ROOF CURB
EF-4	CEILING MOUNTED	100	0.25	100	120/60/1	750	SWITCH SEE ELEC.	BROAN LOSONE SELECT MODEL L100 WITH BACKDRAFT DAMPER. 6" EXHAUST DUCT TO FLAT ROOF CAP
EF-5	CEILING MOUNTED	100	0.25	100	120/60/1	750	OCC. SENSOR SEE ELEC.	BROAN LOSONE SELECT MODEL L100 WITH BACKDRAFT DAMPER. 6" EXHAUST DUCT TO FLAT ROOF CAP
EF-6	CEILING MOUNTED	150	0.25	100	120/60/1	750	SWITCH SEE ELEC.	BROAN LOSONE SELECT MODEL L150 WITH BACKDRAFT DAMPER. 8" EXHAUST DUCT TO FLAT ROOF CAP
EF-7	CEILING MOUNTED	150	0.25	100	120/60/1	750	SWITCH SEE ELEC.	BROAN LOSONE SELECT MODEL L150 WITH BACKDRAFT DAMPER. 8" EXHAUST DUCT TO FLAT ROOF CAP
EF-8	CEILING MOUNTED	100	0.25	100	120/60/1	750	OCC. SENSOR SEE ELEC.	BROAN LOSONE SELECT MODEL L100 WITH BACKDRAFT DAMPER. 6" EXHAUST DUCT TO FLAT ROOF CAP
EF-9	CEILING MOUNTED	100	0.25	100	120/60/1	750	OCC. SENSOR SEE ELEC.	BROAN LOSONE SELECT MODEL L100 WITH BACKDRAFT DAMPER. 6" EXHAUST DUCT SOFFIT GRILLE
EF-10	CEILING MOUNTED	100	0.25	100	120/60/1	750	OCC. SENSOR SEE ELEC.	BROAN LOSONE SELECT MODEL L100 WITH BACKDRAFT DAMPER. 6" EXHAUST DUCT SOFFIT GRILLE
EF-11	CEILING MOUNTED	100	0.25	100	120/60/1	750	OCC. SENSOR SEE ELEC.	BROAN LOSONE SELECT MODEL L100 WITH BACKDRAFT DAMPER. 6" EXHAUST DUCT SOFFIT GRILLE

ELECTRIC HEATER SCHEDULE						
SYM.	TYPE	BTU	KW	CHAR.	CONTROL	REMARKS
EH-1	WALL MOUNTED	2554	0.75	120/60/1	INTEGRAL	QMARK MODEL GFR1500T2 WALL HEATER WITH RECESSED BRACKET AND INTEGRAL T-STAT
EH-2	CEILING RADIANT	2554	0.75	240/60/1	WALL T-STAT	QMARK MODEL CPT52F RADIANT SURFACE MOUNTED CEILING PANEL WITH WALL MOUNTED T-STAT
EH-2a	CEILING RADIANT	2554	0.75	240/60/1	WALL T-STAT	QMARK MODEL CPT52F RADIANT SURFACE MOUNTED CEILING PANEL WITH WALL MOUNTED T-STAT
EH-3	CEILING RADIANT	2554	0.75	240/60/1	WALL T-STAT	QMARK MODEL CPT52F RADIANT SURFACE MOUNTED CEILING PANEL WITH WALL MOUNTED T-STAT
EH-3a	CEILING RADIANT	2554	0.75	240/60/1	WALL T-STAT	QMARK MODEL CPT52F RADIANT SURFACE MOUNTED CEILING PANEL WITH WALL MOUNTED T-STAT
EH-4	WALL MOUNTED	2554	0.75	120/60/1	INTEGRAL	QMARK MODEL GFR1500T2 WALL HEATER WITH RECESSED BRACKET AND INTEGRAL T-STAT
UH-1	WALL MOUNTED	17,075	5.0	240/60/1	WALL T-STAT	QMARK MODEL MUH-05-21 UNIT HEATER WITH WALL BRACKET AND REMOTE T-STAT

DEHUMIDIFICATION UNIT SCHEDULE						
SYM.	TYPE	MOISTURE REMOVAL	CHAR.	AMPS	WEIGHT	REMARKS
DR-1	WALL MOUNTED	17 PINTS / DAY	120/60/1	4.0	50#	EBAC MODEL CD30 DEHUMIDIFICATION UNIT. MOUNT AS HIGH AS POSSIBLE ON WALL. RUN 3/4" DRAIN LINE THRU WALL AND DOWN TO FLOOR SINK IN MECH. ROOM. SEE PLUMBING DWGS.

**Myers ■ Anderson**  
 ■ Architecture  
 ■ Interior Design  
 ■ Landscape Architecture  
 101 North Main Street ■ Pocatello, Idaho 83204 ■ Tel. (208) 232-3711 ■ Fax. (208) 232-5762  
 849 Front Street, Suite 202 ■ Evanston, Wyoming 82930 ■ Tel. (307) 789-0934

ASLA  
 NCAAB  
 AIA

**BEAR LAKE COUNTY COURTHOUSE**  
**PARIS, IDAHO -- BEAR LAKE COUNTY**

PROJECT:  
**MECHANICAL SCHEDULES**

CONTRACTOR SHALL VERIFY ALL DIMENSIONS & CONDITIONS SHOWN OR IMPLIED

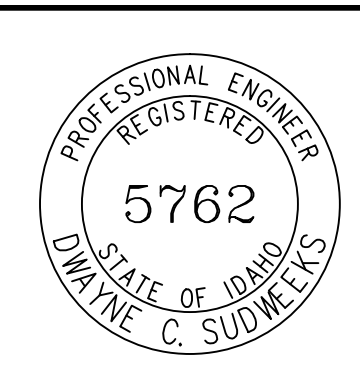
DRAWING SCALE APPLIES TO 22" X 34" SHEET SIZE

REVISION	DATE

DRAWN BY: SR  
 CHECKED BY: DCS  
 JOB NUMBER: 46548-13B  
 PROJECT DATE: JAN, 2019  
 SHEET OF

ORIGINAL DRAWING SIGNED BY: DMAYNE C. SUDWEEKS  
 DATE ORIGINAL SIGNED: JAN, 9TH, 2019  
 ORIGINAL ON FILE AT ENGINEERED SYSTEMS ASSOCIATES  
 1355 EAST CENTER, POCATELLO, IDAHO 83201

**Engineered Systems Associates**  
 1355 EAST CENTER  
 POCATELLO, IDAHO 83201  
 PHONE: (208) 233-0501  
 FAX: (208) 233-0529  
 EMAIL: esa@engsystems.com  
 ESA JOB NUMBER: 18026



**M300**